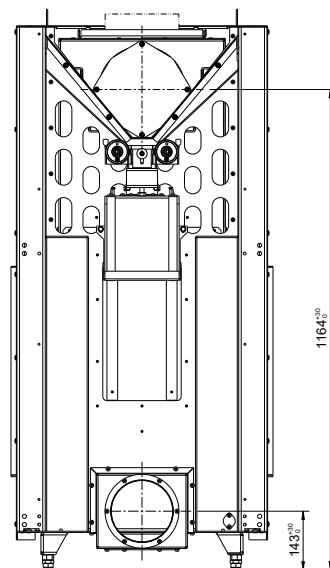
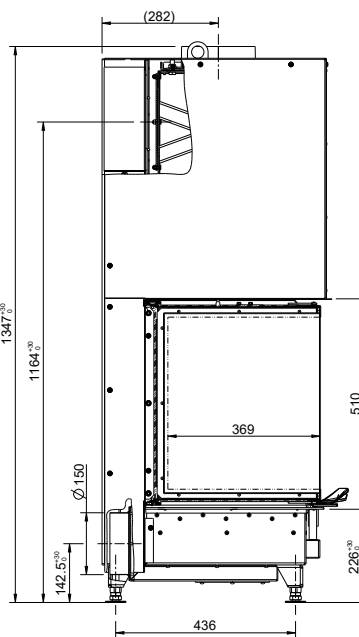
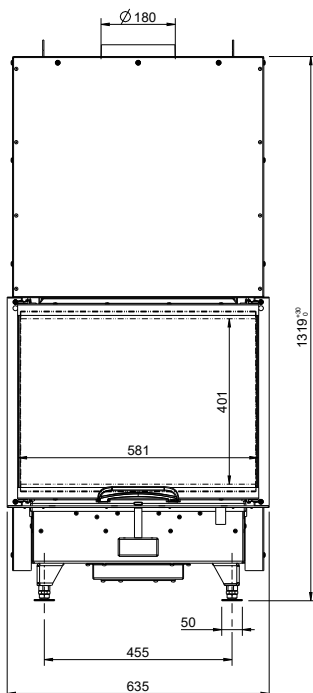
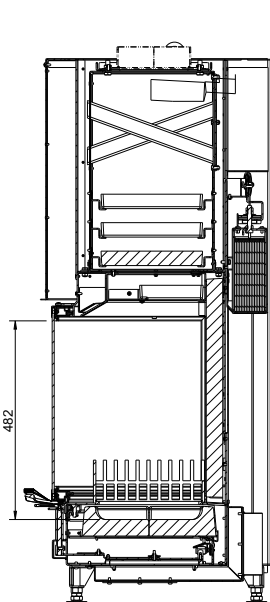
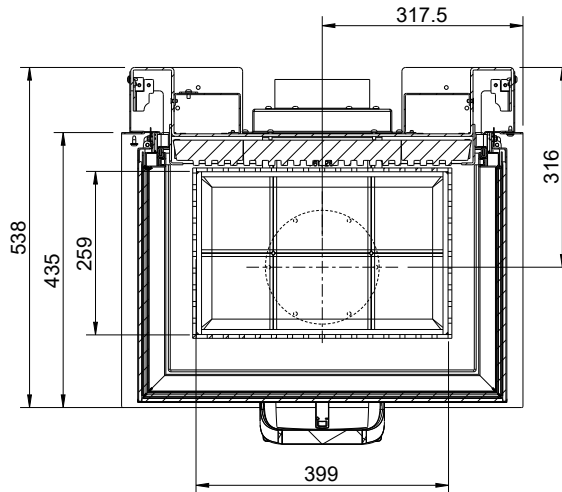
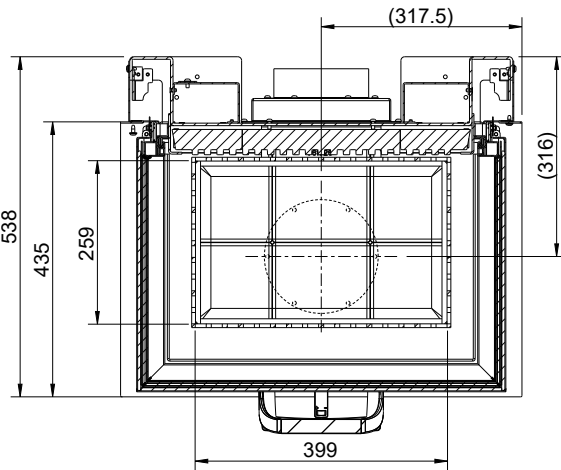
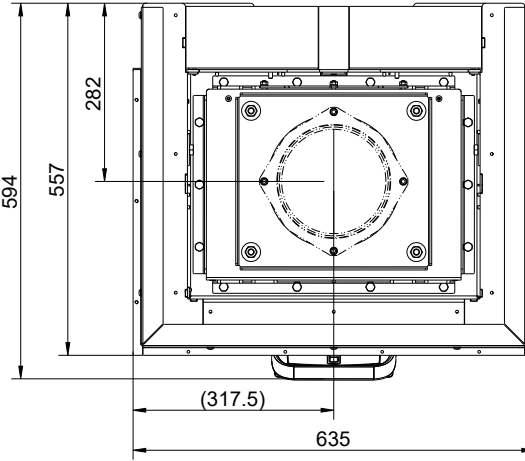
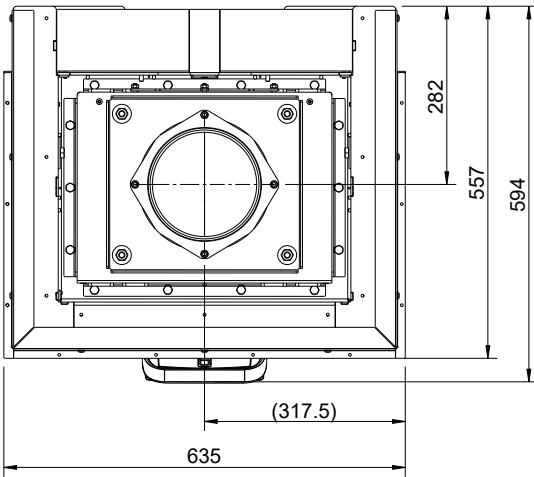
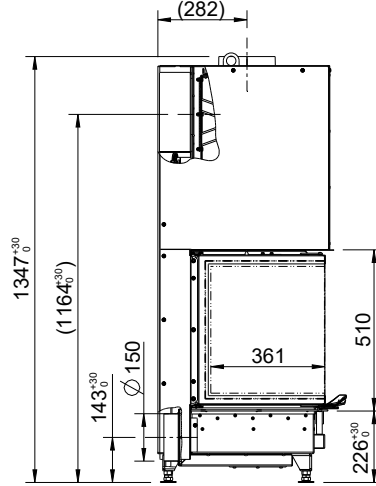
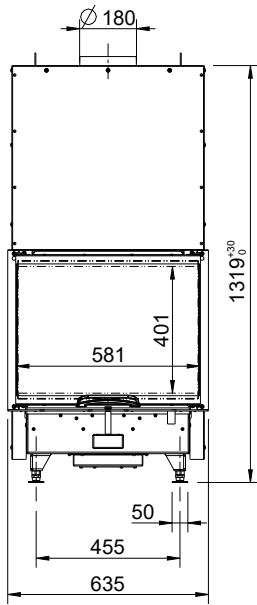


# VUUR-DRIE-60



AUSTROFLAMM





| Dimensions and weight  |                   |
|--|-------------------|
| Height from [mm]   | 1347              |
| Height to [mm]   | 1377              |
| Width (body installation dimension) [mm]   | 635               |
| Depth [mm]   | 557               |
| Door frame height [mm]   | 510               |
| Door frame width [mm]  | 635               |
| Weight [kg]  | 229               |
| Weight Xtra [kg]   | -                 |
| Weight, HMS [kg]   | -                 |
| Flue pipe outlet, diameter [mm]  | 180               |
| dR Distance rear [mm]  | 0                 |
| dS1 Distance left [mm]   | 900               |
| dS2 Distance right [mm]  | 900               |
| dP Radiation front [mm]  | 1100              |
| dF Radiation to the floor [mm]   | under examination |
| dB Distance bottom [mm]  | under examination |
| dL 1 Radiation left [mm]   | under examination |
| dL 2 Radiation right [mm]  | under examination |
| Safety distance to insulation, rear [mm]   | 60                |
| Safety distance to insulation, right [mm]  | -                 |
| Safety distance to insulation, floor [mm]  | -                 |
| Insulation material thickness to installation base [mm]                              | 0                 |
| Insulation material thickness to ceiling [mm]  | 120               |
| Insulation material, left [mm]   | -                 |
| Insulation material thickness, right [mm]  | -                 |
| Insulation material, rear [mm]   | 60                |
| Cross-section, convection outlet [cm <sup>2</sup> ]                                  | 696               |
| Cross-section, convection inlet [cm <sup>2</sup> ]                                   | 696               |
| Max. amount of firewood fuel to be deposited [kg]                                    | 4.7               |
| Output   |                   |
| Nominal heat efficiency [kW]   | 12.0              |
| Minimum heat output [kW]   | 6.0               |
| Maximum heat output [kW]   | 16.0              |
| Energy efficiency class  | A+                |
| Circulating air cross-section with metal heat recovery surface [cm <sup>2</sup> ]    | 1300              |
| Circulating air cross-section without metal heat recovery surface [cm <sup>2</sup> ] | 700               |
| Nominal water heat output [kW]   | -                 |
| Combustion air requirement [m <sup>3</sup> /h]                                       | 46.08             |
| Minimum fuel throughput [kg/h]   | 1.7               |
| Maximum fuel throughput [kg/h]   | 4.7               |
| Outside air connection diameter [Ø mm]   | 150               |
| Equipment  |                   |
| Hinged door  | No                |
| Sliding door   | Yes               |
| Double pane  | No                |
| Hypocaust in compliance with technical regulations                                   | Yes               |
| Data for the chimney sweep   |                   |
| Exhaust gas mass flow [g/s]  | 11.4              |
| Flue gas temperature [°C]  | 276               |
| Minimum delivery pressure at nominal heat output [Pa]                                | 12                |

- not available